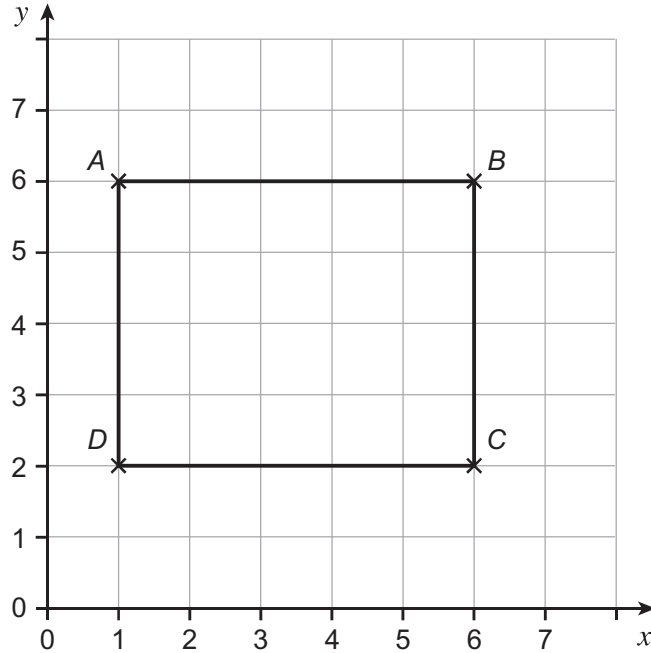


Answer **all** questions in the spaces provided.

1 *ABCD* is a rectangle on a centimetre grid.



1 (a) Write down the coordinates of *A*.

Answer (..... ,) (1 mark)

1 (b) Mark the midpoint of *BC* with a cross.

(1 mark)

1 (c) Work out the perimeter of the rectangle.

.....

Answer cm (2 marks)



2 Work out the following.

2 (a) $184 + 139$

Answer (1 mark)

2 (b) $362 - 207$

Answer (1 mark)

2 (c) 8×65

Answer (1 mark)

2 (d) $138 \div 6$

Answer (1 mark)



3 Work out the **two** missing values in this shopping bill.

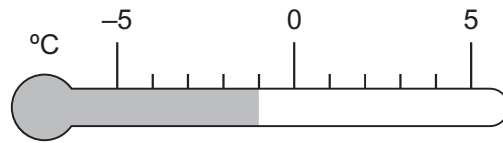
4 doughnuts at 60p each	£2.40
3 coffees at each
Total	£6.00

(2 marks)

Turn over for the next question

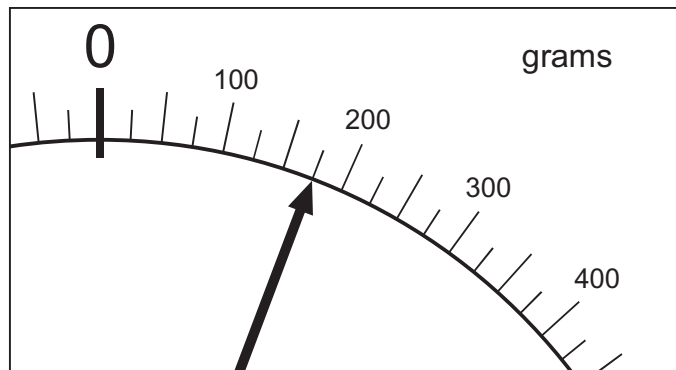


4 (a) Write down the temperature shown.



Answer °C (1 mark)

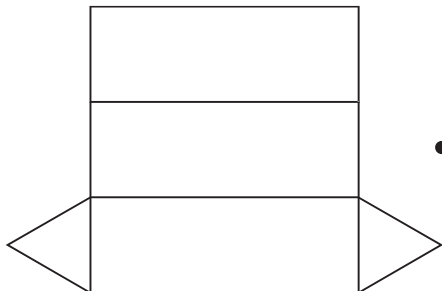
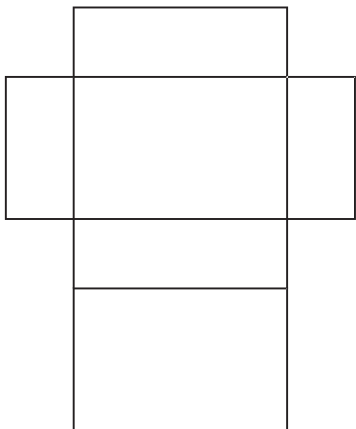
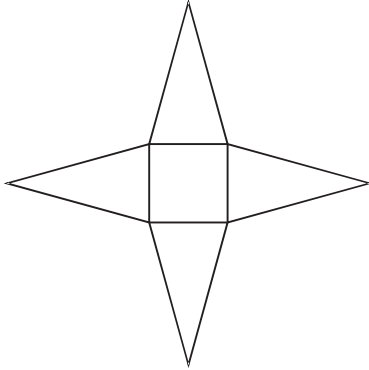
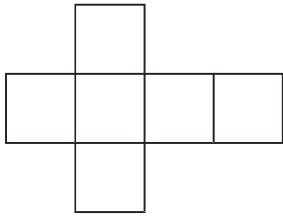
4 (b) Write down the weight shown.



Answer grams (1 mark)



5 Match each net with a solid.
The first one has been done.



- Cuboid
- Pyramid
- Cylinder
- Cube
- Triangular prism

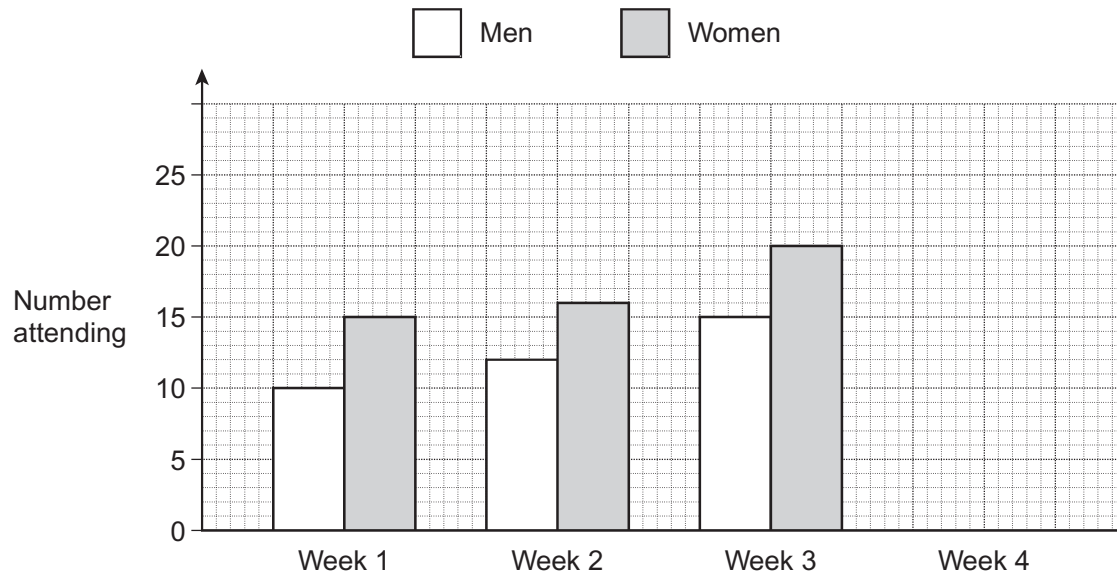
(3 marks)

5

Turn over ►



- 6** Alison records how many men and women attend her fitness class over four weeks. The bar chart shows the information for Weeks 1, 2 and 3.



- 6 (a)** How many **men** attended in Week 2?

Answer (1 mark)

- 6 (b)** How many people attended in Week 3 **altogether**?

.....

Answer (1 mark)



6 (c) 40 people attended the class in Week 4.
There were 8 **more** women than men.

Complete the bar chart for Week 4.

.....

.....

(2 marks)

6 (d) Each week,

- Alison pays out £30 to run the class
- she charges each person £5 to attend.

How much profit did she make in Week 1?

.....

.....

.....

Answer £ (3 marks)

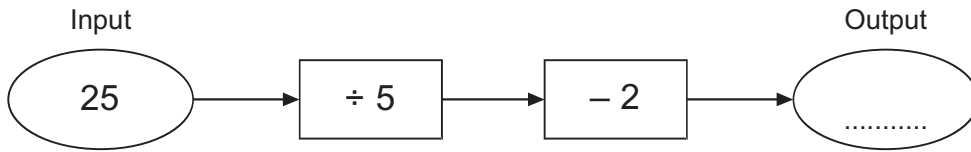
Turn over for the next question

7

Turn over ►



7 (a) Here is a number machine.

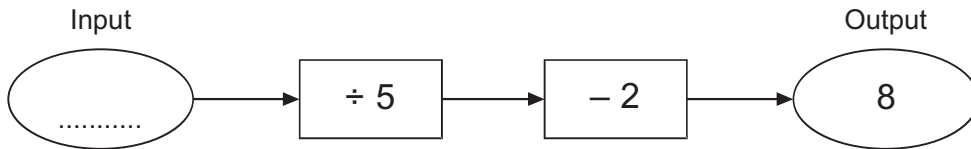


Work out the **output** when the input is 25.

.....

Answer (1 mark)

7 (b) Here is the same number machine.



Work out the **input** when the output is 8.

.....

Answer (2 marks)



8 Here are eight coins.



Ben and Yusaf take **four** coins each.
They both have exactly the same amount of money.

Which coins could they each have?

.....

.....

.....

.....

Ben

Yusaf (3 marks)

6

Turn over ►



9 (a) What **percentage** of this shape is shaded?



.....

Answer % (1 mark)

9 (b) Circle the **two** fractions that are equivalent to $\frac{4}{5}$

$$\frac{2}{10}$$

$$\frac{6}{8}$$

$$\frac{8}{10}$$

$$\frac{20}{25}$$

$$\frac{8}{9}$$

(2 marks)

9 (c) Work out 40% of 70

.....

.....

Answer (2 marks)



***10** Harry is paid £800 per month.

These amounts are taken off his pay.

$\frac{1}{10}$ of his pay for National Insurance.

$\frac{1}{5}$ of his pay for tax.

How much money does he have left each month?

.....
.....
.....
.....
.....
.....
.....

Answer £ (4 marks)

11 (a) Simplify fully $7a + 3a - 4a$

.....

Answer (1 mark)

***11 (b)** Simplify fully $3 \times m \times 2 \times p$

.....

Answer (1 mark)

